

Our cover story

6 DOING IT ALL AGAIN

After successfully owner building on a near perfect block in Birkenhead SA, the challenge of building a sustainable home on a poorly orientated block was too great to pass by. This small home has a floor area of 145m² and sits on a 375m² block in coastal South Australia. It is built on a slab, with a combination of structurally insulated panels and steel cladding for the walls.

PHOTO: FINN HOWARD



6



26

16 ALL BALED UP

Progress ramps up with a straw bale wall raising party.

22 OWNER BUILDER SATISFACTION

How do you feel about owner building afterwards?

26 SHIPSHAPE FOR TWO

One couple's new life involves shipping containers.

33 INVENTION AND TINKERING

Mobile water delivery – created on the cheap!

36 AFFORDABLE HOUSING OXYMORON

Have you considered an intentional community?

40 I'M SORRY FOR WHAT I SAID...

... when we were building the house.

46 COMPOST TOILETS

Reduce your household's environmental impact.

52 GLOBAL COMMUNITIES FOR PEACE

Earth building is still the norm in Nepal and India.

54 TASMANIAN RICE STRAW BALE HOUSE

The result of a chance visit to an in-progress build.

62 PROFESSIONAL HELP OR WING IT?

Know your limitations and play to your strengths.

73 MUD BUILDING TECHNIQUES

There are a variety of ways to build with mud.

76 LADDER SAFETY

Be responsible and sensible when working at height.

80 FROM STONE TO LOGS

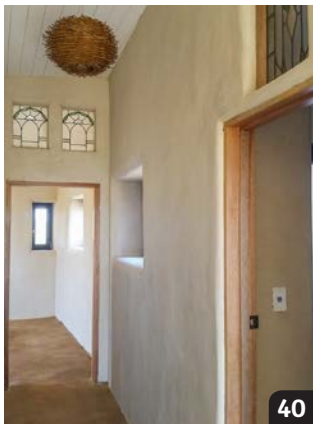
A log cabin for visitor accommodation.



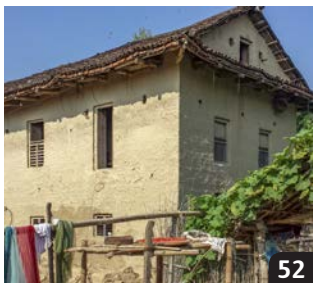
54



80



40



52

REGULAR FEATURES

Our details	4
In house	5
Coming events	14
Line ads	15
Coming soon	25
Directory	68
Subscriptions	71
Back issues	72
Plans	78
Back porch	82